



SHACKLES

4



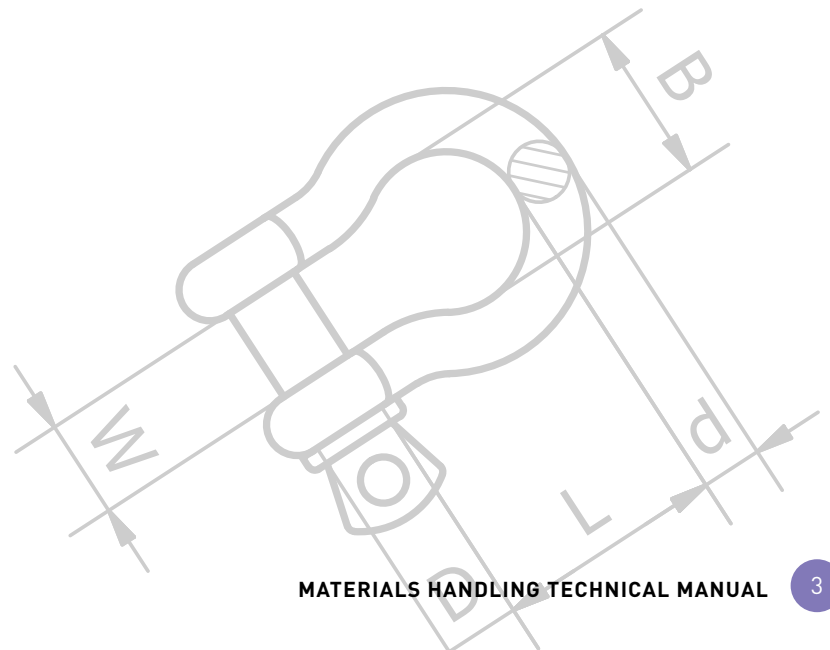
Beaver's shackles are amongst the most versatile items within our range. The shackle plays a central role in many lifting and towing applications in conjunction with our other complementary products. With this in mind Beaver have developed a broad range of shackles in both "Dee" and "Bow" type, "Screw Pin" and "Safety Pin" for such applications. Available in grades 'S', 'M' and Commercial Quality, the Beaver range of shackles are made to the highest quality standards providing the user with assurances. When you need a shackle you can be confident that Beaver will have the right one to service your requirement.



Contents

SHACKLES

BEAVER SHACKLES PRODUCT INFORMATION	4
BEAVER GRADE 'S' SHACKLES IN BUCKETS	8
BEAVER YELLOW PIN GRADE 'S' SHACKLES	10
BEAVER YELLOW PIN GRADE 'S' SAFETY PIN SHACKLES	12
BEAVER COLOUR CODED GRADE 'S' BOW SHACKLES	14
BEAVER GRADE 'M' SHACKLES	16
BEAVER COMMERCIAL GRADE SHACKLES	18
PRODUCT REFERENCE GUIDE	20



BEAVER SHACKLES PRODUCT INFORMATION

Shackle Information

Shackles are used in lifting and static systems as removable links to connect (steel) wire rope, chain and other fittings.

Screw pin shackles are used mainly for non-permanent applications.

Safety pin shackles are used for long-term or permanent applications or where the load may slide on the pin causing rotation of the pin.

Dee shackles are mainly used on one-leg systems whereas anchor or bow shackles are mainly used on multi-leg systems.

Shackles should be inspected before use to ensure that:

- ▶ All markings are legible
- ▶ The threads of the pin and the body are undamaged
- ▶ Never use a safety bolt type shackle without using the split cotter pin
- ▶ The body and the pin are not distorted or unduly worn
- ▶ The body and pin are free from nicks, gouges, cracks and corrosion
- ▶ Shackles may not be heat treated as this may affect their Working Load Limit

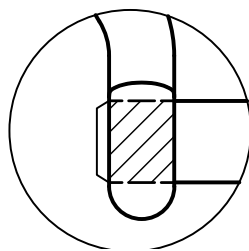
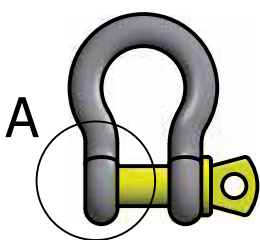
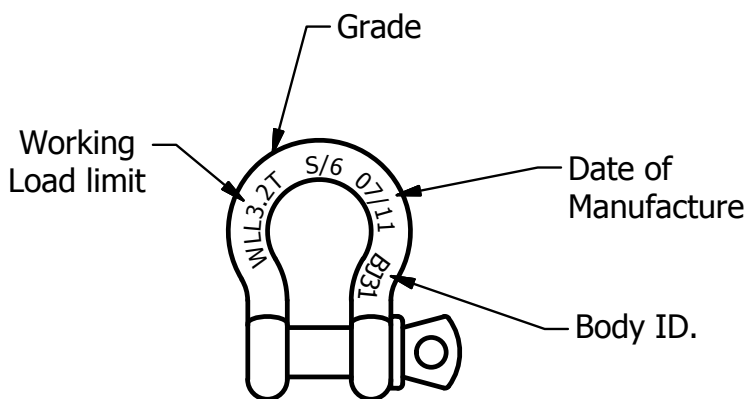
Never modify, repair or reshape a shackle by welding, heating or bending as this will affect the Working Load Limit.



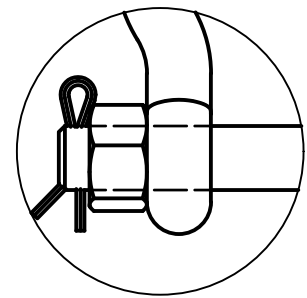
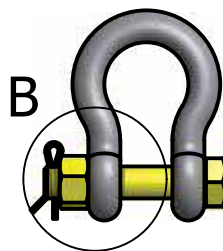
Beaver Grade 'S' Shackles

Beaver Grade S Shackles are a rated shackle that meet the requirement of AS 2741. Grade S Shackles are recommended where high strength is required such as lifting, towing and 4WD applications.

- Available in both Dee and Bow configurations
- Available in both Screw pin and Safety Pin type – see drawing A and B for more information
- Because the pin holds more load than the body, the pin diameter is larger than the body diameter
- For the same W.L.L., they are smaller than grade M
- Beaver's Grade S Shackles come in two colour configurations:
 - Beaver Standard Grade S: Yellow pin
 - Beaver Colour Coded Grade S: Body and pin colour coded to AS 2741, for easy match to components
- The Body ID and date of Manufacture = the Batch ID



Detail A
Screw Pin



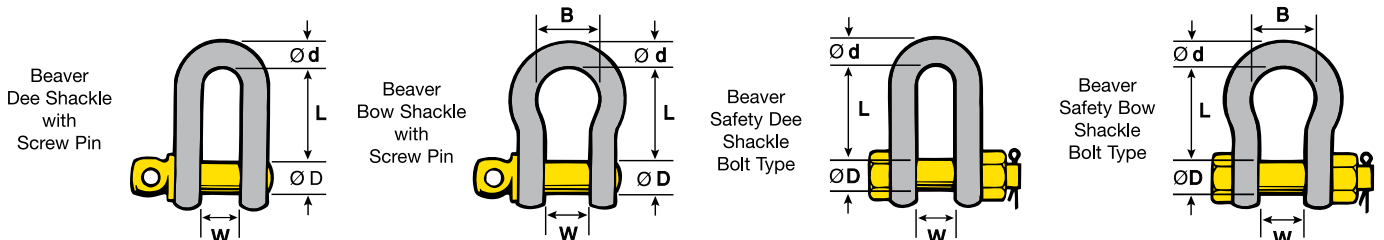
Detail B
Safety Pin

BEAVER SHACKLES PRODUCT INFORMATION

Beaver Alloy Grade 'S' or '6' Shackles - Quick Reference Guide

With yellow painted pin to AS 2741-2002 Australian standards.

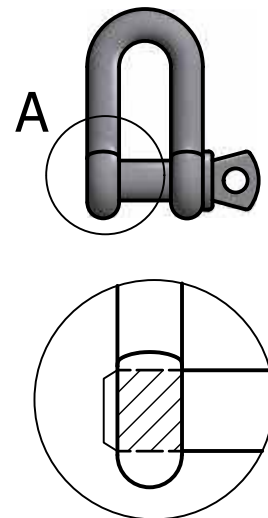
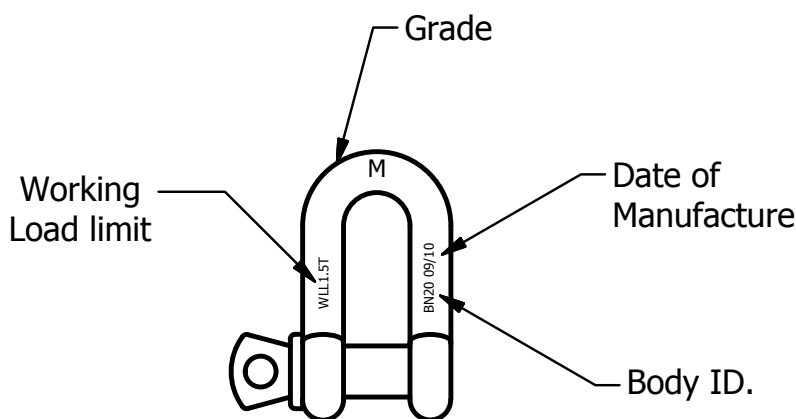
W.L.L Tonne	DIA d mm	DIA PIN D mm	Inside Width W mm	Inside Length		Width of Bow B mm	Approx Weight Each	
				Dee Type L mm	Bow Type L mm		Screw Pin Kg	Safety Pin Kg
0.33	5	6	10	—	22	15	0.02	—
0.5	6	8	12	22	29	20	0.06	0.07
0.75	8	10	13	26	31	21	0.11	0.13
1	10	11	17	32	37	26	0.15	0.17
1.5	11	13	18	37	43	29	0.21	0.25
2	13	16	21	41	48	33	0.37	0.44
3.2	16	19	27	51	61	43	0.65	0.79
4.7	19	22	32	60	72	51	1.06	1.26
6.5	22	25	37	71	84	58	1.56	1.88
8.5	25	29	43	81	95	68	2.32	2.78
9.5	29	32	46	90	108	74	3.28	3.87
12	32	35	52	100	119	83	4.51	5.26
13.5	35	38	57	113	133	92	5.43	6.94
17	38	41	60	124	146	98	7.89	8.79
25	44	51	73	146	178	127	13.40	14.99
35	51	57	83	171	197	146	18.85	20.65
45	57	63	95	181	222	160	26.06	29.01
55	63	70	105	203	267	184	37.86	41.05
85	76	83	127	229	330	200	58.68	62.24
120	89	95	146	267	381	241	—	110.00
150	102	108	165	318	432	279	—	160.00



Beaver Grade 'M' Shackles

Beaver Grade M Shackles are a rated shackle that comply with the requirements of AS 2741. Grade M shackles are commonly used in marine applications.

- Only available in Dee configuration
- Screw pin type only – please see drawing A for more information
- Because the pin holds more load than the body, the pin diameter is larger than the body diameter
- The Body ID and date of Manufacture = the Batch ID



Detail A
Screw Pin

Beaver Commercial Shackles

Beaver Commercial Grade Shackles are for general purpose use only and are available in both hot dipped galvanised and electro galvanised finishes. They are not produced to any standard.

- Commercial Galvanised Shackles are available in both Dee and Bow type configuration
- Commercial Electro Galvanised Shackles are available in Dee type configuration only
- Screw pin type only
- Unlike other types of shackles, commercial shackles have the same diameter pin as the body
- Not suitable for lifting or towing





BEAVER GRADE 'S' SHACKLES IN BUCKETS



Beaver's shackles in buckets offer less handling to reduce cost whilst enabling better inventory control. Supplied in a merchandise display friendly with a P.O.S. Barcode Sales Aid available.

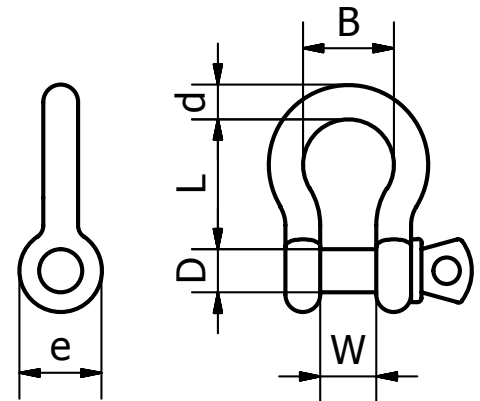


Beaver Colour Coded Screw Pin

Bow Shackle Bucket - Sizes 10mm - 25mm

Beaver Code	Size mm	Working Load Limit tonnes	Shackle Colour	Dia. d mm	Pin Dia. D mm	Inside Width W mm	Inside Length L mm	Dia. Boss e mm	Width of Bow B mm	Approx. Weight each kg	Square Bucket	Qty / Bucket	Weight / Bucket
242310MP	10 x 11	1.00	Violet	10	11	17	37	25	26	0.15	2L	30	4.23
242313MP	13 x 16	2.00	Green	13	16	21	48	33	33	0.37	2L	14	4.62
242316MP	16 x 19	3.20	Yellow	16	19	27	61	40	43	0.65	5L	20	12.40
242319MP	19 x 22	4.70	Grey	19	22	32	72	48	51	1.06	5L	10	10.70
242322MP	22 x 25	6.50	Brown	22	25	37	84	54	58	1.56	5L	8	13.12
242325MP	25 x 29	8.50	Blue	25	29	43	95	60	68	2.32	5L	4	9.20

- ▶ Beaver Alloy Grade 'S' colour coded shackles have been developed in accordance with Australian Standard AS 2741-2002.
- ▶ All Beaver Grade 'S' shackles are easily identified with prominent stamping indicating MM/YY for quick reference of the products manufacture and working load limit.
- ▶ Test certificates are readily available on request.
- ▶ Suitable for mining, resource and construction industry applications.
- ▶ Our colour coded shackles take the guess work out of choosing the right capacity when matching lifting components.

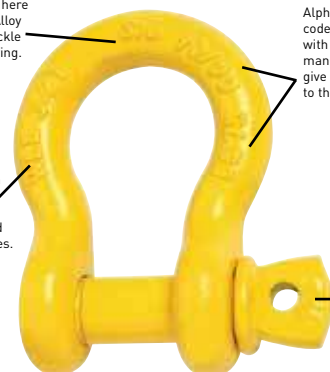


The mark S/6 here indicates an Alloy Grade 'S' shackle suitable for lifting.

Alpha-numeric codes in conjunction with Month & Year of manufacture (mm/yy) give quick reference back to the test certificate.

Individually stamped with the W.L.L. showing the Working Load Limit in tonnes.

S/6 indicates an Alloy Grade 'S' shackle pin.



SHACKLES

SECTION 4



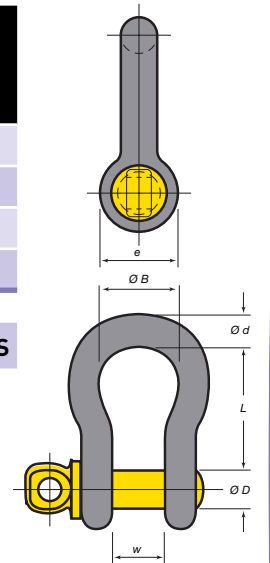
Beaver Hot Dipped Galvanised Screw Pin

Bow Shackle Bucket - Sizes 5mm - 25mm

Beaver Code	Size mm	Working Load Limit tonnes	Dia. d mm	Pin Dia. D mm	Inside Width w	Width of Bow B mm	Inside Length L mm	Dia. Boss e mm	Square Bucket	Qty / Bucket	Weight / Bucket
242305P	5 x 6	0.33	5	6	10	15	22	14	2L	100	2.70
242306P	6 x 8	0.50	6	8	12	20	29	17	2L	100	3.00
242308P	8 x 10	0.75	8	10	13	21	31	21	2L	50	4.30
242311P	11 x 13	1.50	11	13	18	29	43	27	2L	20	4.44

NOTE: Dimensions are nominal - actual dimensions fall within the tolerances of AS 2741-2002.

BOW SHACKLES UP TO 8.5T ARE ONLY AVAILABLE IN BUCKETS



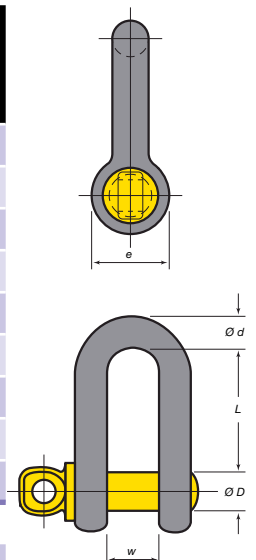
Beaver Hot Dipped Galvanised Screw Pin

Dee Shackle Bucket - Sizes 6mm - 25mm

Beaver Code	Size mm	Working Load Limit tonnes	Shackle Colour	Dia. d mm	Pin Dia. D mm	Inside Width W mm	Inside Length L mm	Dia. Boss e mm	Square Bucket	Qty / Bucket	Weight / Bucket
241306P	6 x 8	0.5	HDG	6	8	12	22	17	2L	100	2.80
241308P	8 x 10	0.75	HDG	8	10	13	26	21	2L	50	3.85
241310P	10 x 11	1.00	HDG	10	11	17	32	25	2L	30	3.90
241311P	11 x 13	1.50	HDG	11	13	18	37	27	2L	20	4.00
241313P	13 x 16	2.00	HDG	13	16	21	41	33	2L	14	4.20
241316P	16 x 19	3.20	HDG	16	19	27	51	40	5L	20	11.60
241319P	19 x 22	4.70	HDG	19	22	32	60	48	5L	10	10.20
241322P	22 x 25	6.50	HDG	22	25	37	71	54	5L	8	11.44
241325P	25 x 29	8.50	HDG	25	29	43	81	60	5L	4	8.62

NOTE: Dimensions are nominal - actual dimensions fall within the tolerances of AS 2741-2002.

DEE SHACKLES UP TO 8.5T ARE ONLY AVAILABLE IN BUCKETS



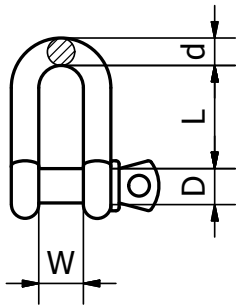
SHACKLES

BEAVER YELLOW PIN GRADE 'S' SHACKLES

Beaver Yellow Pin Grade 'S' Screw Pin Shackles to AS 2741

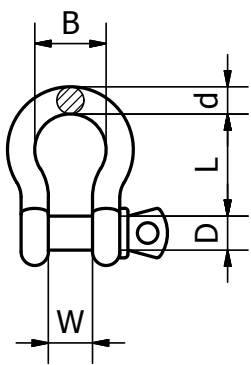
Chain Dee Type - Capacities 0.5 - 35 tonne

Code	Size mm	W.L.L Tonne	Type	Shape	Closing Method	DIA d mm	DIA PIN D mm	Inside Width W mm	Inside Length L mm	DIA Boss F mm	Approx Weight Kg	UOM	Pack Qty
241329	29 x 32	9.50	Grade S	Dee	Screw	29	32	46	90	67	3.28	Each	8
241332	32 x 35	12.00	Grade S	Dee	Screw	32	35	52	100	76	4.51	Each	5
241335	35 x 38	13.50	Grade S	Dee	Screw	35	38	57	113	84	5.43	Each	4
241338	38 x 41	17.00	Grade S	Dee	Screw	38	41	60	124	92	7.89	Each	3
241344	44 x 51	25.00	Grade S	Dee	Screw	44	51	73	146	110	13.4	Each	2
241351	51 x 57	35.00	Grade S	Dee	Screw	51	57	83	171	127	18.85	Each	1



Beaver Yellow Pin Grade 'S' Screw Pin Shackles to AS 2741*Anchor Bow Type - Capacities 0.33 - 55 tonne*

Code	Size mm	W.L.L Tonne	Type	Shape	Closing Method	DIA d mm	DIA PIN D mm	Inside Width W mm	Inside Length L mm	Width of Bow B mm	DIA Boss F mm	Approx Weight Kg	UOM	Pack Qty
242329	29 x 32	9.5	Grade S	Bow	Screw	29	32	46	108	74	67	3.28	Each	6
242332	32 x 35	12	Grade S	Bow	Screw	32	35	52	119	83	76	4.51	Each	5
242335	35 x 38	13.5	Grade S	Bow	Screw	35	38	57	133	92	84	5.43	Each	3
242338	38 x 41	17	Grade S	Bow	Screw	38	41	60	146	98	92	7.89	Each	3
242344	44 x 51	25	Grade S	Bow	Screw	44	51	73	178	127	110	13.40	Each	2
242351	51 x 57	35	Grade S	Bow	Screw	51	57	83	197	146	127	18.85	Each	1
242363	63 x 70	55	Grade S	Bow	Screw	63	70	105	267	184	152	37.86	Each	1

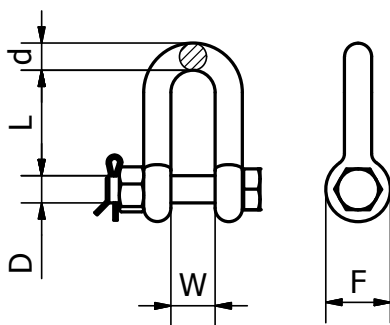


BEAVER YELLOW PIN GRADE 'S' SAFETY PIN SHACKLES

Yellow Pin Grade 'S' Safety Pin Shackles to AS 2741

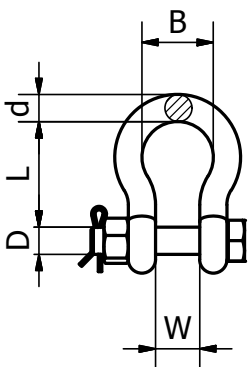
Dee Type - Capacities 2.0 - 13.5 tonne

Code	Size mm	W.L.L Tonne	Type	Shape	Closing Method	DIA d mm	DIA PIN D mm	Inside Width W mm	Inside Length L mm	DIA Boss F mm	Approx Weight Kg	UOM	Pack Qty
243313	13 x 16	2.00	Grade S	Dee	Safety Pin	13	16	21	41	33	0.44	Each	60
243316	16 x 19	3.20	Grade S	Dee	Safety Pin	16	19	27	51	40	0.79	Each	35
243319	19 x 22	4.70	Grade S	Dee	Safety Pin	19	22	32	60	48	1.26	Each	20
243322	22 x 25	6.50	Grade S	Dee	Safety Pin	22	25	37	71	54	1.88	Each	12
243325	25 x 29	8.50	Grade S	Dee	Safety Pin	25	29	43	81	60	2.78	Each	10
243329	29 x 32	9.50	Grade S	Dee	Safety Pin	29	32	46	90	67	3.87	Each	8
243332	32 x 35	12.00	Grade S	Dee	Safety Pin	32	35	52	100	76	5.26	Each	4



Beaver Yellow Pin Grade 'S' Safety Pin Shackles to AS 2741*Anchor Bow Type - Capacities 2.0 - 55 tonne*

Code	Size mm	W.L.L Tonne	Type	Shape	Closing Method	DIA d mm	DIA PIN D mm	Inside Width W mm	Inside Length L mm	Width of Bow B mm	DIA Boss F mm	Approx Weight Kg	UOM	Pack Qty
244313	13 x 16	2.00	Grade S	Bow	Safety Pin	13	16	21	48	33	33	0.44	Each	50
244316	16 x 19	3.20	Grade S	Bow	Safety Pin	16	19	27	61	43	40	0.79	Each	30
244319	19 x 22	4.70	Grade S	Bow	Safety Pin	19	22	32	72	51	48	1.26	Each	20
244322	22 x 25	6.50	Grade S	Bow	Safety Pin	22	25	37	84	58	54	1.88	Each	12
244325	25 x 29	8.50	Grade S	Bow	Safety Pin	25	29	43	95	68	60	2.78	Each	10
244329	29 x 32	9.50	Grade S	Bow	Safety Pin	29	32	46	108	74	67	3.87	Each	6
244332	32 x 35	12.00	Grade S	Bow	Safety Pin	32	35	52	119	83	76	5.26	Each	4
244335	35 x 38	13.50	Grade S	Bow	Safety Pin	35	38	57	133	92	84	6.94	Each	4
244338	38 x 41	17.00	Grade S	Bow	Safety Pin	38	41	60	146	98	92	8.79	Each	2
244345	45 x 51	25.00	Grade S	Bow	Safety Pin	45	51	73	178	127	110	14.99	Each	1
244351	51 x 57	35.00	Grade S	Bow	Safety Pin	51	57	83	197	146	127	20.65	Each	1
244363	63 x 70	55.00	Grade S	Bow	Safety Pin	63	70	105	267	184	152	41.05	Each	1





BEAVER COLOUR CODED GRADE 'S' SCREW PIN BOW SHACKLES



Our colour coded design to international lifting standards, makes it safe and easy to match components.

Beaver Screw Pin and Safety Pin Bow Shackles

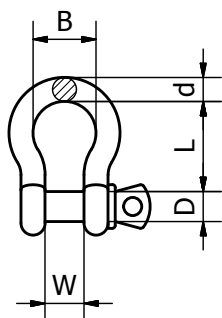
Capacities: 1 to 12 tonne

Beaver continue to offer the widest possible choice of shackles, our next generation shackles take the guesswork out of choosing the right capacity when matching lifting components. All Beaver Grade 'S' shackles are easily identified with their prominent stamping for quick reference of the products' manufacture and working load limit. Lifting and rigging applications for these coloured shackles are in the mining, resources and construction industries.

When safety counts - make the right choice first time with a Beaver colour coded product.

Beaver Screw Pin Bow Shackles Grade 'S' to AS 2741

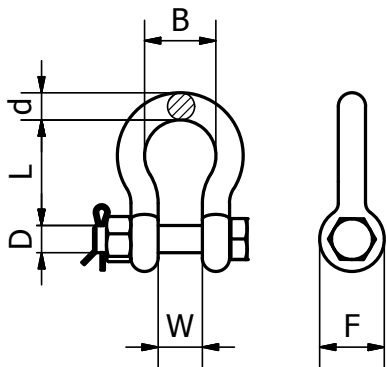
Code	Size mm	W.L.L Tonne	Type	Shape	Closing Method	Shackle Colour	DIA d mm	Pin DIA D mm	Inside Width W mm	Inside Length L mm	Width of Bow B mm	DIA Boss F mm	Approx Weight Kg	UOM	Pack Qty
242310M	10 x 11	1.00	Grade S	Bow	Screw	Violet	10	11	17	37	26	25	0.15	Each	180
242313M	13 x 16	2.00	Grade S	Bow	Screw	Green	13	16	21	48	33	33	0.37	Each	75
242316M	16 x 19	3.20	Grade S	Bow	Screw	Yellow	16	19	27	61	43	40	0.65	Each	35
242319M	19 x 22	4.70	Grade S	Bow	Screw	Grey	19	22	32	72	51	48	1.06	Each	20
242322M	22 x 25	6.50	Grade S	Bow	Screw	Brown	22	25	37	84	58	54	1.56	Each	15
242325M	25 x 29	8.50	Grade S	Bow	Screw	Blue	25	29	43	95	68	60	2.32	Each	10
242332M	32 x 35	12.00	Grade S	Bow	Screw	Orange	32	35	52	119	83	76	4.51	Each	5



BEAVER COLOUR CODED GRADE 'S' SAFETY PIN BOW SHACKLES

Beaver Safety Pin Shackles Grade 'S' to AS 2741

Code	Size mm	W.L.L Tonne	Type	Shape	Closing Method	Shackle Colour	DIA d mm	Pin DIA D mm	Inside Width W mm	Inside Length L mm	Width of Bow B mm	DIA Boss F mm	Approx Weight Kg	UOM	Pack Qty
244313M	13 x 16	2.00	Grade S	Bow	Safety Pin	Green	13	16	21	48	33	33	0.44	Each	50
244316M	16 x 19	3.20	Grade S	Bow	Safety Pin	Yellow	16	19	27	61	43	40	0.79	Each	30
244319M	19 x 22	4.70	Grade S	Bow	Safety Pin	Grey	19	22	32	72	51	48	1.26	Each	20
244322M	22 x 25	6.50	Grade S	Bow	Safety Pin	Brown	22	25	37	84	58	54	1.88	Each	12
244325M	25 x 29	8.50	Grade S	Bow	Safety Pin	Blue	25	29	43	95	68	60	2.78	Each	10

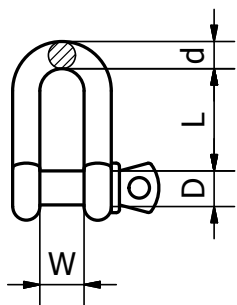


BEAVER GRADE 'M' SHACKLES

Beaver Grade 'M' Large Dee Shackles AS 2741

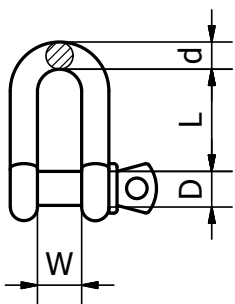
Black - Capacities 0.5 - 20 tonne

Code	Size mm	W.L.L Tonne	Type	Finish	Shape	Closing Method	DIA d mm	DIA PIN D mm	Inside Width W mm	Inside Length L mm	DIA Boss F mm	Approx Weight Kg	UOM	Pack Qty
230010	10 x 13	0.50	Grade M	Self Colour	Dee	Screw	10	13	19	38	25	0.16	Each	200
230013	13 x 16	0.75	Grade M	Self Colour	Dee	Screw	13	16	28	54	32	0.35	Each	80
230016	16 x 19	1.50	Grade M	Self Colour	Dee	Screw	16	19	32	63	38	0.61	Each	50
230020	19 x 22	2.00	Grade M	Self Colour	Dee	Screw	19	22	38	73	44	1.10	Each	30
230023	22 x 25	3.00	Grade M	Self Colour	Dee	Screw	22	25	44	83	51	1.50	Each	25
230025	25 x 29	3.80	Grade M	Self Colour	Dee	Screw	25	29	51	95	57	2.14	Each	15
230028	29 x 32	5.00	Grade M	Self Colour	Dee	Screw	29	32	54	105	63	2.98	Each	10
230032	32 x 35	6.00	Grade M	Self Colour	Dee	Screw	32	35	60	114	70	3.10	Each	5
230035	35 x 38	7.00	Grade M	Self Colour	Dee	Screw	35	38	67	127	76	4.61	Each	5
230038	38 x 44	9.50	Grade M	Self Colour	Dee	Screw	38	44	70	137	89	8.01	Each	5
230042	41 x 48	11.00	Grade M	Self Colour	Dee	Screw	41	48	76	146	95	10.48	Each	3
230045	44 x 51	13.00	Grade M	Self Colour	Dee	Screw	44	51	83	156	102	12.65	Each	3
230050	51 x 57	16.00	Grade M	Self Colour	Dee	Screw	51	57	98	114	114	18.50	Each	1
230056	57 x 63	20.00	Grade M	Self Colour	Dee	Screw	57	63	108	210	127	28.00	Each	1



Beaver Grade 'M' Grade Dee Shackles AS 2741*Galvanised - Capacities 0.25 - 20 tonne*

Code	Size mm	W.L.L Tonne	Type	Finish	Shape	Closing Method	DIA d mm	DIA PIN D mm	Inside Width W mm	Inside Length L mm	DIA Boss F mm	Approx Weight Kg	UOM	Pack Qty
230306	6 x 10	0.25	Grade M	Galvanised	Dee	Screw	6	10	13	25	19	0.061	Each	600
230310	10 x 13	0.50	Grade M	Galvanised	Dee	Screw	10	13	19	38	25	0.16	Each	200
230313	13 x 16	0.75	Grade M	Galvanised	Dee	Screw	13	16	28	54	32	0.35	Each	80
230316	16 x 19	1.50	Grade M	Galvanised	Dee	Screw	16	19	32	63	38	0.61	Each	50
230320	19 x 22	2.00	Grade M	Galvanised	Dee	Screw	19	22	38	73	44	1.10	Each	30
230323	22 x 25	3.00	Grade M	Galvanised	Dee	Screw	22	25	44	83	51	1.50	Each	25
230325	25 x 29	3.80	Grade M	Galvanised	Dee	Screw	25	29	51	95	57	2.14	Each	15
230328	29 x 32	5.00	Grade M	Galvanised	Dee	Screw	29	32	54	105	63	2.98	Each	10
230332	32 x 35	6.00	Grade M	Galvanised	Dee	Screw	32	35	60	114	70	3.10	Each	5
230335	35 x 38	7.00	Grade M	Galvanised	Dee	Screw	35	38	67	127	76	4.61	Each	5
230338	38 x 44	9.50	Grade M	Galvanised	Dee	Screw	38	44	70	137	89	8.01	Each	5
230342	41 x 48	11.00	Grade M	Galvanised	Dee	Screw	41	48	76	146	95	10.48	Each	3



BEAVER COMMERCIAL GRADE SHACKLES

Beaver Commercial Hot Dipped Galvanised

Dee Shackle - Sizes 5mm - 25mm

Code	Size mm	Finish	Shape	Closing Method	Approx Weight Kg	UOM	Pack Qty
200305	5	Galvanised	Dee	Screw	0.016	Each	500
200306	6	Galvanised	Dee	Screw	0.025	Each	500
200308	8	Galvanised	Dee	Screw	0.055	Each	200
200310	10	Galvanised	Dee	Screw	0.120	Each	200
200311	11	Galvanised	Dee	Screw	0.160	Each	150
200313	13	Galvanised	Dee	Screw	0.230	Each	100
200316	16	Galvanised	Dee	Screw	0.5	Each	50
200320	20	Galvanised	Dee	Screw	1.000	Each	30
200323	23	Galvanised	Dee	Screw	1.300	Each	20
200325	25	Galvanised	Dee	Screw	1.900	Each	15



NOT TO BE USED FOR LIFTING

Beaver Commercial Hot Dipped Galvanised

Bow Shackle - Sizes 5mm - 25mm

Code	Size mm	Finish	Shape	Closing Method	Approx Weight Kg	UOM	Pack Qty
205305	5	Galvanised	Bow	Screw	0.017	Each	500
205306	6	Galvanised	Bow	Screw	0.027	Each	500
205308	8	Galvanised	Bow	Screw	0.060	Each	200
205310	10	Galvanised	Bow	Screw	0.130	Each	200
205311	11	Galvanised	Bow	Screw	0.175	Each	150
205313	13	Galvanised	Bow	Screw	0.250	Each	100
205316	16	Galvanised	Bow	Screw	0.600	Each	50
205320	20	Galvanised	Bow	Screw	1.100	Each	30
205323	23	Galvanised	Bow	Screw	1.400	Each	20
205325	25	Galvanised	Bow	Screw	2.000	Each	15



NOT TO BE USED FOR LIFTING

Beaver Commercial Electro Galvanised*Dee Shackle - Sizes 5mm - 25mm*

Code	Size mm	Finish	Shape	Closing Method	Approx Weight Kg	UOM	Pack Qty
200205	5	Electro Galvanised	Dee	Screw	0.015	Each	500
200206	6	Electro Galvanised	Dee	Screw	0.024	Each	500
200208	8	Electro Galvanised	Dee	Screw	0.053	Each	200
200210	10	Electro Galvanised	Dee	Screw	0.115	Each	200
200211	11	Electro Galvanised	Dee	Screw	0.153	Each	150
200213	13	Electro Galvanised	Dee	Screw	0.223	Each	100
200216	16	Electro Galvanised	Dee	Screw	0.490	Each	50
200220	20	Electro Galvanised	Dee	Screw	0.980	Each	30
200223	23	Electro Galvanised	Dee	Screw	1.260	Each	20
200225	25	Electro Galvanised	Dee	Screw	1.850	Each	15

**NOT TO BE USED FOR LIFTING**



PRODUCT REFERENCE GUIDE

Part Number	Page Number
200205	19
200206	19
200208	19
200210	19
200211	19
200213	19
200216	19
200220	19
200223	19
200225	19
200305	18
200306	18
200308	18
200310	18
200311	18
200313	18
200316	18
200320	18
200323	18
200325	18
205305	18
205306	18
205308	18
205310	18
205311	18
205313	18
205316	18
205320	18
205323	18
205325	18
230010	16
230013	16
230016	16
230020	16
230023	16
230025	16

Part Number	Page Number
230028	16
230032	16
230035	16
230038	16
230042	16
230045	16
230050	16
230056	16
230306	17
230310	17
230313	17
230316	17
230320	17
230323	17
230325	17
230328	17
230332	17
230335	17
230338	17
230342	17
241306	8
241308	8
241310	8
241311	8
241313	8
241316	8
241319	8
241322	8
241325	8
241329	10
241332	10
241335	10
241338	10
241344	10
241351	10
242305	9

Part Number	Page Number
242306	9
242308	9
242310	9
242311	9
242313	9
242316	9
242319	9
242322	11
242325	11
242329	11
242332	11
242335	11
242338	11
242344	11
242351	11
242363	11
243313	12
243316	12
243319	12
243322	12
243325	12
243329	12
243332	12
244313	13
244316	13
244319	13
244322	13
244325	13
244329	13
244332	13
244335	13
244338	13
244345	13
244351	13
244363	13
241306P	9

Part Number	Page Number
241308P	9
241310P	9
241311P	9
241313P	9
241316P	9
241319P	9
241322P	9
241325P	9
242305P	9
242306P	9
242308P	9
242310MP	8
242310P	9
242311P	9
242313M	14
242313MP	8
242313P	9
242316M	14
242316MP	8
242316P	9
242319M	14
242319MP	8
242319P	9
242322M	14
242322MP	8
242322P	9
242325M	14
242325MP	8
242325P	9
244310M	15
244313M	15
244316M	15
244319M	15
244322M	15
244325M	15
244332M	15



SHACKLES

SECTION

4

NOTES



NOTES
